

# SACU INVESTMENT ROUNDTABLE

## INVESTMENT AND EXPORT OPPORTUNITIES IN THE PRIORITY SECTORS

### Leather and Leather Products

**12-13 APRIL 2022**  
**GABORONE, BOTSWANA**



# INTRODUCTION

## Background

The leather value chain globally is estimated at over USD 100 billion. A comparison of this value chain with other commodities reveals that its trade is greater than the combined trade of meat, sugar, coffee and tea.

## Vision:

Development of an integrated, sustainable and globally competitive of SACU Leather & Leather Product Value Chain.

## Mission:

Promoting integrated and sustainable industrial growth of value-added manufacturing in SACU Leather & Leather Product value chain.

Enhancing continental and global competitiveness of the SACU Leather & Leather Product Value Chain.

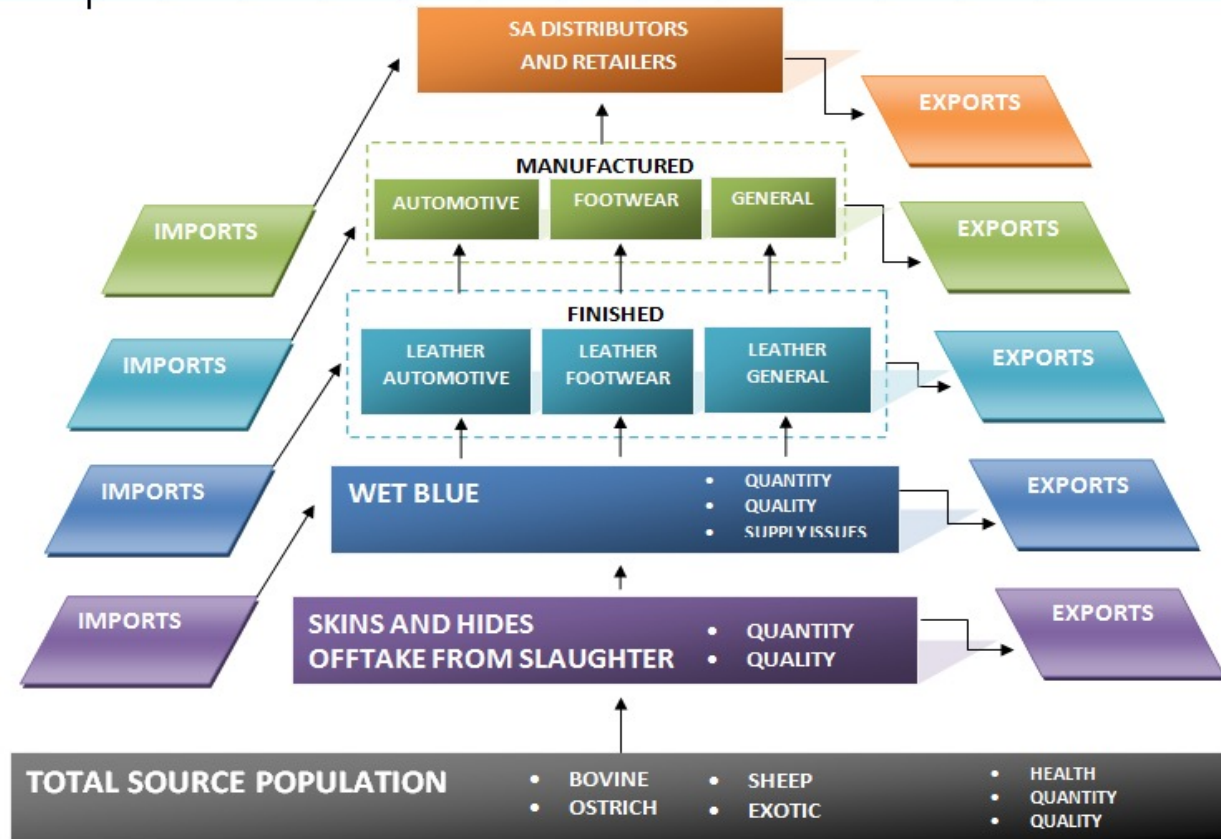
Promoting continental and global trade of the SACU Leather & Leather Product Value Chain.

## Rationale:

SACU member States have abundant resources of Hides and skins which are by products obtained from various primary upstream diverse platforms such as Red Meat Industry, Ostrich, Crocodile, Animals from wild, Game and Hunting industry and downstream manufacturing capacity.

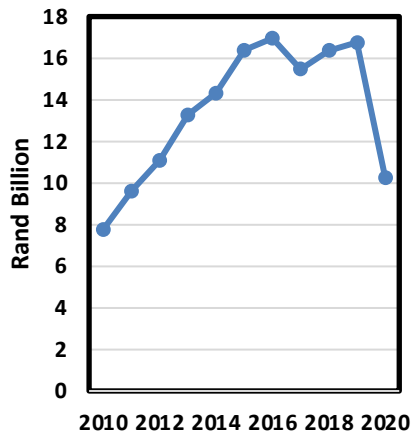
# Leather Value Chain Pyramid

SACU OPPORTUNITIES

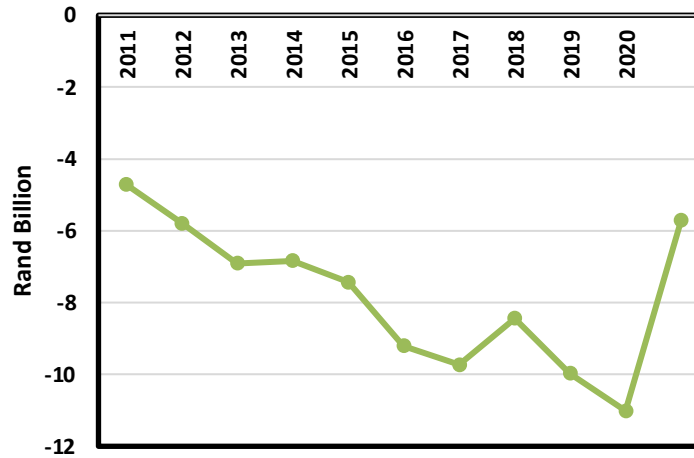


LEATHER VALUE CHAIN PYRAMID

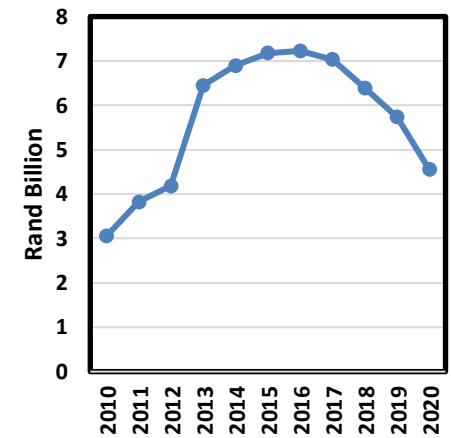
### TOTAL IMPORTS HS41,HS42,HS64



### TRADE POSTION HS41,HS42,HS64



### TOTAL EXPORTS HS41,HS42,HS64



Source: Quantec (2010-2020)

# Growing The Regional Value Chain

## Drivers for growing the regional leather & leather products value chains

1. Sufficient cattle population to produce enough hides to sustain the leather industry.
2. Animal husbandry practices that enable the production of high-quality hides. (Reduction of man-made defects, brands, quality of flaying)
3. Security of supply of hides (restrict exports of live animals)
4. Availability of Slaughter facilities and the ability to attract investment in abattoirs that meet export market requirements, with adequate capacity of tanneries to process raw hides.
5. Skills development for leather beneficiation. (leather & footwear technology education)
6. Research and Development across the entire Leather Value Chain

# Leather and Leather Products Value Chain

## Leather & Leather Products Value Chain in SACU & SADC countries

### Leather & Hide production in the SACU & SADC countries in (tonnes)

SADC member state	Average Production (tons)
<b>South Africa</b>	<b>31,875</b>
Tanzania	8,550
<b>Namibia</b>	<b>2,135</b>
Angola	1,548
<b>Lesotho</b>	<b>1,353</b>
D.R Congo	1,279
Madagascar	801
<b>Botswana</b>	<b>440</b>
Mozambique	374
Malawi	328
Zambia	222
<b>Swaziland</b>	<b>130</b>
Zimbabwe	94
Mauritius	31
Seychelles	Not available

Input	Step1 Significant Cattle Breeding	Step2 Artisanal Slaughter	Non Hide Tanning	Step3 Hide Tanning	Step4 Leather Processing	Step 5 Leather and leather products export
AO	Y	Y		n/a	n/a	n/a
<b>BW</b>	Y	Y		<b>N</b>	Y	Y
DRC	Y	Y		n/a	sp	Y
<b>LS</b>	Y	Y		<b>N</b>	<b>n/a</b>	Y
MG	Y	Y		Y	Y	Y
MW	Y	Y		N	sp	Sp
MU(*)	sp	n/a		Y	Y	Y
MZ	Y	Y		N	N	N
<b>NA</b>	Y	Y		Y	Y	Y
SC	N	N		N	N	N
<b>ZA</b>	Y	Y		Y	Y	Y
<b>SW</b>	sp	sp		<b>N</b>	<b>N</b>	Y
TZ	Y	Y		Y	Y	Y
ZM	Y	Y		Y	Y	Y
ZW	Y	Y		Y	Y	Y
<b>Output</b>	<b>Animals for meat and hide production</b>	<b>Hides</b>		<b>Leather</b>	<b>Leather Products</b>	<b>Leather Products Export</b>

Source: FAOSTAT (2016)

Y=yes N=no n/a= not available sp=small production

# SACU Value Chain Development

SACU OPPORTUNITIES

	Botswana	Lesotho	Namibia	South Africa	Eswatini
<b>Raw hide</b>	Contract tanning at SA	Contract tanning at SA	Export to SA	Export to SACU	Contract tanning SA
<b>Wet blue hides</b>	Establish wet blue plant with CETP (Central Effluent Treatment Plant)	Establish wet blue plant	Expand wet blue plant.	Enhance wet blue plant	Establish wet blue plant
<b>Crust and Finished leather</b>	Establish Auto leather tanning and finishing.	Expand Auto Leather Seat Sewing plant capacity.	Expand hide & sheep skin tanning. Develop fur seal skin tanning capacity.	Contract tanning for BSNE. Establish Auto Leather Seat Sewing plant.	Establish leather tanning and finishing
<b>Sheep &amp; goat skins</b>	Contract tanning or Pickling export to SA	Contract tanning or export to SA	Contract tanning or export to SA	Expand breeding stock	Contract tanning or export to SA
<b>Ostrich skins</b>	Export to SA	Export to SA	Export to SA	Enhance tanning and finishing	Export to SA
<b>Crocodile skins</b>			Collaboration with SA to enhance tanning capacity.	Develop CITES e-permit system. Standards for crocodile industry.	
<b>Fur Seal Skins</b>			Contract tanning at SA. Develop fur seal skin tanning capacity	Expand fur seal skin tanning capacity	
<b>Export policy, CITES e-permits and standards for crocodile industry</b>	<ol style="list-style-type: none"> <li>1. Harmonize hides &amp; skins exports restrictions within SACU.</li> <li>2. Exports of live seeps and goats outside SACU to be restricted.</li> <li>3. SA to develop CITES e-permit system.</li> <li>4. SA to update Standards for Crocodiles in Captivity SANS 631 for crocodile industry.</li> </ol>				

# Key Opportunities

## SACU OPPORTUNITIES

- ❑ Hides and skins are by-product of the meat industry
- ❑ Only South Africa has a complete and operational full leather and exotic leather processing value chain (65% of hides are processed in automotive seats, 20% in furniture upholstery and about 15 % to 20% in footwear leather)
- ❑ Namibia has opportunity to scale up down stream processing of hides and skins
- ❑ Botswana is the second largest hide producer in SACU and can augment leather processing capacity
- ❑ Lesotho has a few footwear factories and leather car seat sewing plants
- ❑ Eswatini has potential to develop a footwear manufacturing and medium scale footwear leather tannery
- ❑ Sheep & goat skins available in SACU are under benefited and have a declining breeding stock

Source: FAOSTAT (2016)

Y=yes N=no n/a= not available sp=small  
production



# Key Opportunities

- SACU Member States can collaborate through contract tanning to take advantage of the capacity in South Africa, thus achieving economies of scale and controlling costs.
- There is potential for establishing wet blue plants in members states, which will open up opportunities for crust and finished leather processing.
- Export of live sheep and goats should be restricted,
- Capacity for tanning exotic and high value skins (crocodile and seal skin) can be expanded to reduce exports of un-processed skins.

# Conclusion

- ❑ Combining Strength in the Leather Value Chain is the way forward for SACU in a Globally competitive environment
- ❑ Integration of each stage of the supply chain from collection of hides and skins, to tanning; product manufacturing and marketing of products is a key factor in realising growth in the leather sector for SACU member states.
- ❑ Therefore, member states must leverage on the strengths of each country across the leather value chain and further capacitate the sector to benefit from the opportunities presented by the global market.

# THANK YOU



Private Bag 13285, Windhoek, Namibia  
Cnr Julius K. Nyerere & Feld Street  
Tel +264 61 295 8000 Fax: +264 61 245 611  
Website: [www@sacu.int](http://www@sacu.int)