

SACU in Figures 2021



28 JANUARY 2022

Prepared by

The Revenue Management Sub-Directorate

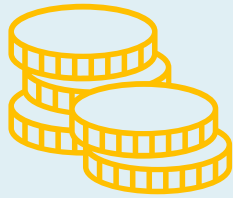
Introduction

This statistical brief compiled by the Secretariat serves a quick reference to selected basic indicators in the region as of **28 January 2022**. It contains indicators on the area size, population estimates (2020), real sector (2020), merchandise trade (2020), and annual inflation rates (2021). The data source is the SACU statistical database, Statistics Offices and Central Banks in the Member States.

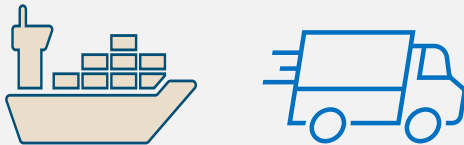
Highlights



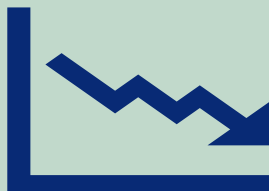
Population in SACU grew by 8.2 million over the past decade



SACU's economy was estimated at R6.0 trillion in 2020, compared to R5.6 trillion recorded in 2019



In 2020, SACU recorded a trade deficit of R203.3 billion with the rest of the World



SACU Harmonized Consumer Price Index decelerated to 4.6 percent in 2020 compared to 4.9 percent in 2019

A. Area Size

Table 1: Area in SACU (in km²)

SACU Member States	Area
Botswana	582 000 km ²
Lesotho	30 355 km ²
Namibia	825 615 km ²
South Africa	1 219 090 km ²
Eswatini	17 364 km ²
SACU	2 674 424 km²

B. Population Estimates

Table 2: Member States Population Estimates in descending order

	2017	2018	2019	2020	2021
SACU	64 245 463	65 553 059	66 707 227	67 659 785	68 342 214
South Africa	56 521 948	57 725 600	58 775 022	59 622 350	60 142 978
Namibia	2 368 747	2 413 643	2 458 936	2 504 498	2 550 226
Botswana	2 266 857	2 302 878	2 338 851	2 374 698	2 410 338
Lesotho	1 941 941	1 951 688	1 961 985	1 972 790	2 077 310
Eswatini¹	1 106 451	1 120 092	1 133 522	1 146 903	1 160 362

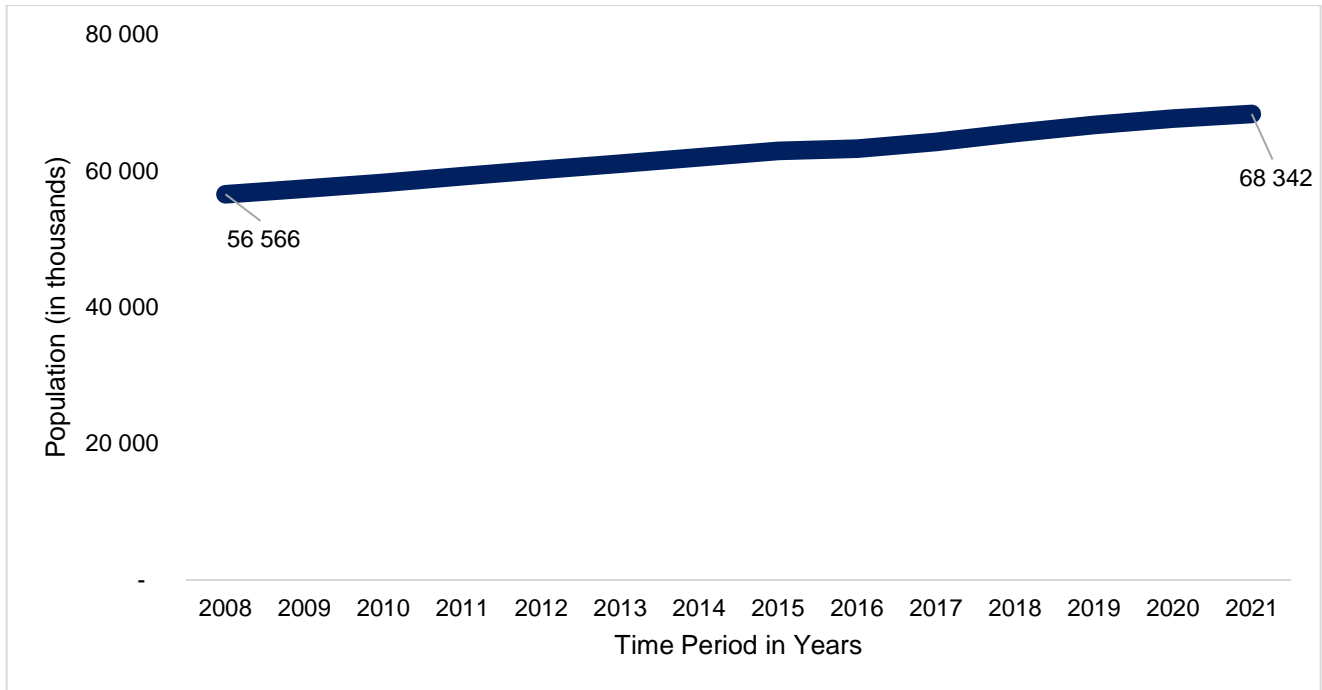
Source: Member States Population Projections

¹ Revisions for 2017 to 2020 aligned to the 2017 Eswatini Population and Housing Census: 2017-2037 Population Projections

SACU's Population is on a steady increase

The population grew by 8.2 million people over the last decade between 2012 and 2021

Figure 1: SACU Population ('000)

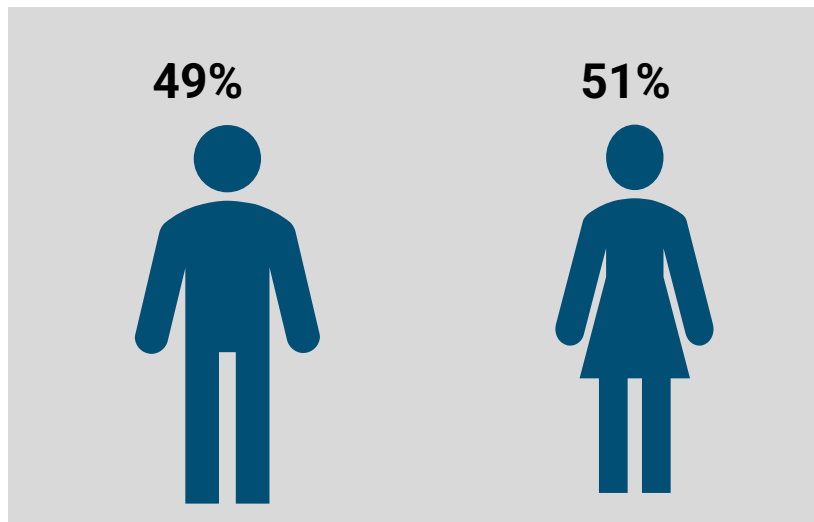


Source: Member States Population Projections

Females in SACU account for the largest share of the Population

The population structure by sex in SACU for the year 2021 shows that 51 percent of the population was made up of female

Figure 2: SACU Population by Sex in 2021



Source: Member States Population Projections

C. GROSS DOMESTIC PRODUCT (Nominal: R million)

Table 3: GDP at Current Prices (in ZAR) by Member States

Member States	2015	2016	2017	2018	2019	2020
Botswana	184 043	230 184	231 843	246 718	265 284	246 640
Eswatini	51 784	56 132	58 689	61 771	64 615	65 432
Lesotho	30 107	31 354	30 727	33 272	34 188	37 452
Namibia	146 019	157 708	171 570	181 009	181 234	174 827
South Africa	4 049 884	4 359 061	4 653 579	4 873 899	5 077 625	5 521 075
SACU	4 461 837	4 834 438	5 146 408	5 396 669	5 622 946	6 045 426

GDP growth rates (%)						
Member States	2015	2016	2017	2018	2019	2020
Botswana	-1.7	4.3	2.9	4.5	3.0	-4.8
Eswatini	2.2	1.1	2.0	2.4	2.2	-1.9
Lesotho	3.1	3.6	-3.2	-1.2	-0.4	-6.5
Namibia	4.3	0.0	-1.0	1.1	-1.6	-8.5
South Africa	1.2	0.4	1.4	0.8	0.2	1.5
SACU (weighted average)	1.2	0.6	1.4	1.0	0.2	0.9

Source: Statistics Office in the Member States (National Accounts), and Secretariat computation

Table 4: Contribution to GDP by Economic Activity at Current Prices in 2020 (%)

Economic Activity	Botswana	Eswatini	Lesotho	Namibia	South Africa
Agriculture, hunting, forestry and fishing	2.2	8.4	4.7	9.2	2.6
Mining and quarrying	8.7	0.2	14.2	9.6	6.4
Manufacturing	5.7	26.6	14.6	11.1	11.7
Electricity, gas and water supply	1.2	2.0	4.5	3.7	2.8
Construction	10.7	2.6	1.8	1.9	2.4
Wholesale, retail trade, hotel and restaurants ²	13.0	15.0	6.9	11.3	11.9
Transport, storage and Communications	5.0	5.6	4.6	4.3	6.7
Financial intermediation & Business Services	11.1	11.2	14.9	12.9	22.0
Other activities ³	37.1	21.8	23.3	30.5	23.9
Taxes less subsidies on products	5.2	8.2	10.6	5.5	9.5
GDP at market prices	100.0	100.0	100.0	100.0	100.0

Source: Statistics Office in the Member States (National Accounts), and Secretariat computation

Table 5: GDP by Economic Activity at Constant Prices, Annual Growth Rates (%) for 2020

Economic Activity ⁴	Botswana	Eswatini	Lesotho	Namibia	South Africa
Agriculture, hunting, forestry and fishing	-2.7	-5.4	8.3	6.1	13.4
Mining and quarrying	-26.5	25.1	-17.2	-14.9	-11.9
Manufacturing	-14.9	-10.1	-7.3	-18.3	12.3
Electricity, gas and water supply	-6.3	-18.0	8.7	19.5	-5.9
Construction	-11.4	-3.3	-38.5	-9.8	-19.8
Wholesale, retail trade, hotel and restaurants	1.2	-0.0	-30.4	-11.6	-12.0 ¹
Transport and storage	-2.2	-10.5	26.9	-23.1	-15.4 ⁵
Information & Communication Technology	2.0	75.6	-13.7	17.4	--
Financial intermediation & Business Services	2.7	-3.6	5.4	-12.6	0.8
Taxes less subsidies on products	2.7	-3.2	-7.6	-27.5	-10.9
GDP at constant prices	-8.7	-1.9	-6.5	-8.5	-6.4

Source: Statistics Office in the Member States (National Accounts), and Secretariat computation

On GDP Performance

SACU's economy was estimated at R6.0 trillion in 2020, compared to R5.6 trillion recorded in 2019. The region recorded a growth of 0.9 percent compared to 0.2 percent recorded in 2019.

² Includes Accommodation

³ Because of differences in the use of ISIC Revisions, Other activities has been grouped to include: Public administration and defence; compulsory social security, Education; Health; Arts; Other Service; General Government and Personal services

⁴ Selected economic activities

⁵ Includes Information and Communication Technology

Table 6: GDP by Expenditure at Current Prices for 2020 (R million)

Expenditure Category	Botswana	Eswatini	Lesotho	Namibia	South Africa
Final consumption expenditure	209 735	58 006	43 093	166 526	4 577 180
Household final consumption expenditure	120 410	43 030	30 400	120 080	3 437 068
General government final consumption expenditure	89 324	14 976	12 693	46 445	1 140 111
Gross capital formation	68 287	8 386	8 233	25 686	703 692
Gross domestic expenditure	290 617	68 174	55 003	191 709	5 280 871
Exports of goods and services	77 331	29 460	15 001	58 348	1 533 645
Imports of goods and services	114 606	27 678	32 552	75 230	1 289 107
GDP at market prices	246 640	65 432	37 452	174 827	5 521 075

Source: Statistics Office in the Member States

D. Merchandise Trade Statistics

In 2020, SACU recorded a trade deficit of R203.3 billion with the rest of the World, compared to R24.6 billion deficit recorded in 2019

Table 7: SACU Trade with the Rest of the World (R million)

Imports	2016	2017	2018	2019	2020
Botswana	87 741	77 980	83 684	94 832	108 164
Eswatini	21 368	21 530	24 721	26 522	26 039
Lesotho	23 341	27 916	28 372	29 853	24 252
Namibia	96 502	92 902	115 567	112 289	114 721
South Africa	1 099 293	1 106 978	1 232 405	1 273 145	1 123 357
SACU	1 328 245	1 327 306	1 484 749	1 536 641	1 396 533
Exports	2016	2017	2018	2019	2020
Botswana	107 148	92 720	87 108	75 655	69 634
Eswatini	23 900	24 016	24 653	28 860	28 577
Lesotho	8 813	14 154	10 063	13 443	13 405
Namibia	66 550	69 198	98 808	92 240	94 209
South Africa	1 115 959	1 183 959	1 249 419	1 296 807	1 393 989
SACU	1 322 370	1 384 047	1 470 051	1 507 005	1 599 814

Source: Statistics Office in the Member States

Both intra-SACU imports and exports decreased in 2020 when compared to 2019

Table 8: Intra-SACU Trade (R million)

Imports	2016	2017	2018	2019	2020
Botswana	65 496	56 685	59 690	62 867	71 895
Eswatini	16 544	17 019	18 629	19 503	18 784
Lesotho	17 672	19 773	21 773	22 063	16 959
Namibia	62 250	55 092	54 207	53 778	42 714
South Africa	31 832	37 252	38 594	42 211	40 750
SACU	193 794	185 821	192 893	200 422	191 102
Exports	2016	2017	2018	2019	2020
Botswana	27 385	12 168	10 440	9 639	10 439
Eswatini	16 258	17 040	17 095	19 810	19 279
Lesotho	4 517	5 774	3 873	5 271	4 631
Namibia	21 275	23 531	24 196	25 227	21 197
South Africa	140 261	133 741	137 058	146 134	132 706
SACU	209 696	192 254	192 662	206 081	188 252

Source: Statistics Office in the Member States

E. Inflation Rates

SACU Members States recorded higher Annual inflation rates in 2021 compared to 2020

Table 9: Annual Inflation rates (%)

Member States	2017	2018	2019	2020	2021
Botswana	3.3	3.2	2.8	1.9	6.7
Eswatini	6.3	4.8	2.6	3.9	3.9
Lesotho	5.2	4.8	5.2	5.0	6.1
Namibia	6.2	4.3	3.7	2.2	3.6
South Africa	5.3	4.7	4.1	3.3	4.5
SACU HCPI	5.6	4.7	4.9	4.6	5.7 ⁶

Source: Statistics Office in the Member States and Secretariat computation

SACU Harmonized Consumer Price Index (HCPI)

SACU regional annual inflation forecast as measured by the SACU HCPI was higher at 5.7 percent in 2021 compared to 4.6 percent in 2020.

⁶ Secretariat's forecast